

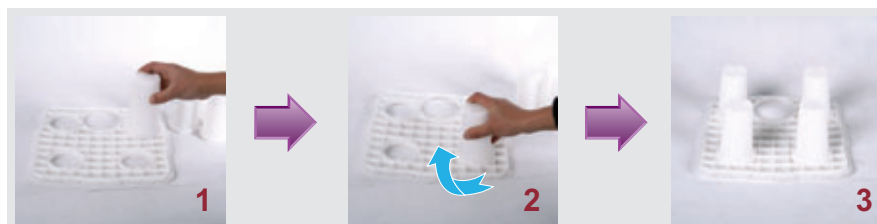
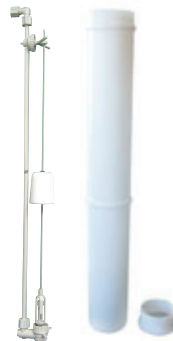
Brine Tanks & Cabinets

Blow and injection molding machines produce all brine tanks, cabinets, tank jackets, salt grids, brine wells, safety floats, air checks, bypass and installation accessories in-house. Canature uses only NSF Certified high-density polyethylene for exceptional durability and crack resistance.



High Quality Tank Components

- Durable, injection-molded salt grids reduce bridging. Available for both square and round brine tanks with snap-on legs for compact shipping.
- Closed bottom brine well reduced intrusion of unwanted impurities
- Injection molded reliable brine valve





Item #	Model	Color	Liquid Volume		Tank Dimensions (inches)	5 Pack Carton Dimensions (inches)	Salt Capacity		5 Pack Carton Shipping Weight	
			US Gal	Liters	L x W x H	L x W x H	Lbs	Kg	Lbs	Kg
Brine Tanks										
30020001	BTR-70	Vanilla	20.3	76.5	15.8 x 32.1	16.7 x 16.7 x 61.0	185.0	92.8	41.6	18.9
30020003	BTR-70	Black	20.3	76.5	15.8 x 32.1	16.7 x 16.7 x 61.0	185.0	92.8	41.6	18.9
30020004	BTR-70	Blue	20.3	76.7	15.8 x 32.1	16.7 x 16.7 x 61.0	185.0	92.8	41.6	18.9
30020005	BTR-100	Vanilla	29.5	111.5	18.1 x 34.7	18.9 x 18.9 x 65.6	270.0	122.2	52.8	23.9
30020007	BTR-100	Black	29.5	111.5	18.1 x 34.7	18.9 x 18.9 x 65.6	270.0	122.2	52.8	23.9
30020008	BTR-100	Blue	29.5	111.5	18.1 x 34.7	18.9 x 18.9 x 65.6	270.0	122.2	52.8	23.9
30020011	BTR-145	Black	42.3	159.7	20.3 x 37.4	21.9 x 21.9 x 72.2	385.0	174.2	65.6	29.8
30020032	BTR-200	Grey	53.0	200.3	23.0 x 40.5	24.6 x 24.6 x 84	700.0	316.7	125.0	56.6
30020013	BTS-70	Vanilla	19.0	71.8	13.1 x 13.1 x 34.7	14.4 x 14.4 x 62	175.0	92.8	48.8	22.1
30020015	BTS-70	Black	19.0	71.8	13.1 x 13.1 x 34.7	14.4 x 14.4 x 62	175.0	92.8	48.8	22.1
30020016	BTS-70	Blue	19.0	71.8	13.1 x 13.1 x 34.7	14.4 x 14.4 x 62	175.0	92.8	48.8	22.1
30020021	BTS-100	Vanilla	25.0	94.5	15.0 x 15.0 x 34.7	16.6 x 16.7 x 61	230.0	104.1	54.4	24.7
30020023	BTS-100	Black	25.0	94.5	15.0 x 15.0 x 34.7	16.6 x 16.7 x 61	230.0	104.1	54.4	24.7
30020024	BTS-100	Blue	25.0	94.5	15.0 x 15.0 x 34.7	16.6 x 16.7 x 61	230.0	104.1	54.4	24.7
* All brine tanks come with salt grid, safety float and brine well										
Cabinets										
25020021	CS1-935	Grey / Black	36.2	136.7	13.8 x 23.6 x 34.5	15.6 x 25.2 x 46.5	225.0	101.8	88.0	39.9
25020022	CS1-1035	Grey / Black	36.2	136.7	13.8 x 23.6 x 34.5	15.6 x 25.2 x 46.5	225.0	101.8	108.0	49.0
* Cabinets shipped in single quantities with NSF Approved fiberglass tank & WQA Gold Seal Approved 85 cross-linked Canature cation resin, fine gravel underbedding and distributor. Cabinets comes with brine well and safety float.										

Features:

- Blow-molded from high quality NSF Certified high density polyethylene providing exceptional crack resistance
- Seamless one-piece construction with molded handles for easy handling and tight fit lid for security
- Stackable, lightweight design
- Brine valve with Safety (standard) or optional air-check
- Salt grid with removable legs for compact shipment
- 10 Year Guarantee
- 5 pieces/package
- Brine tanks available in Black, Vanilla or Blue
- Cabinet available with grey body / Black lid only
- 18.6 gal (70L) and 26.5 gal (100L) available in square and round
- 38.4 gal (145L) and 53 gal (200L) available in round only

